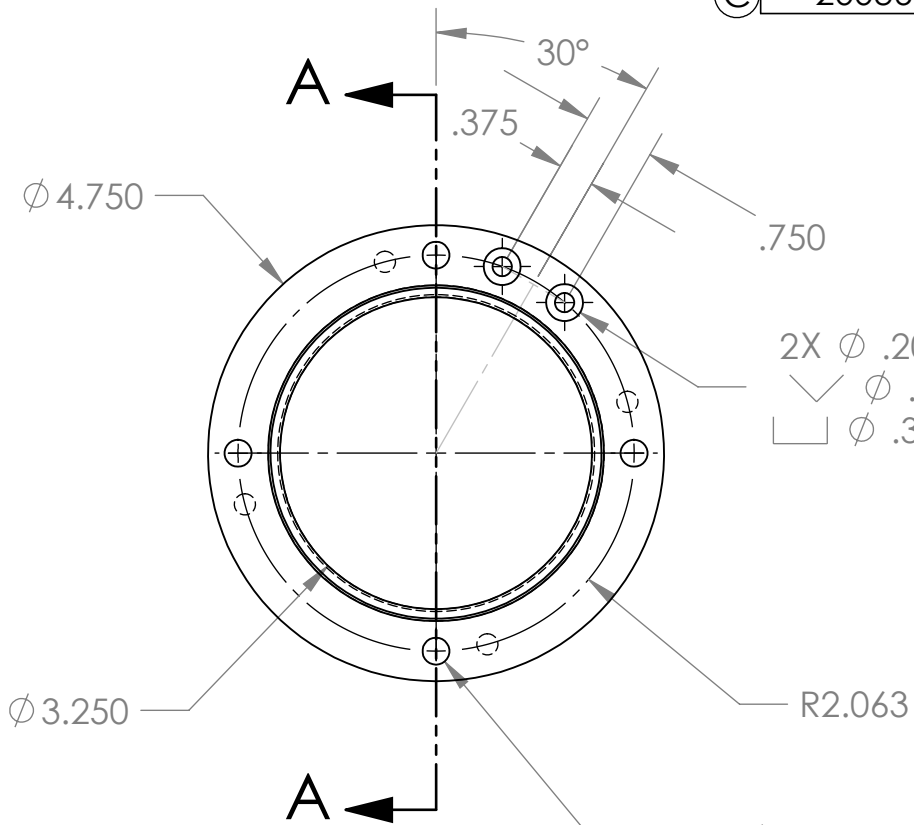


8 7 6 5 4 3 2 1

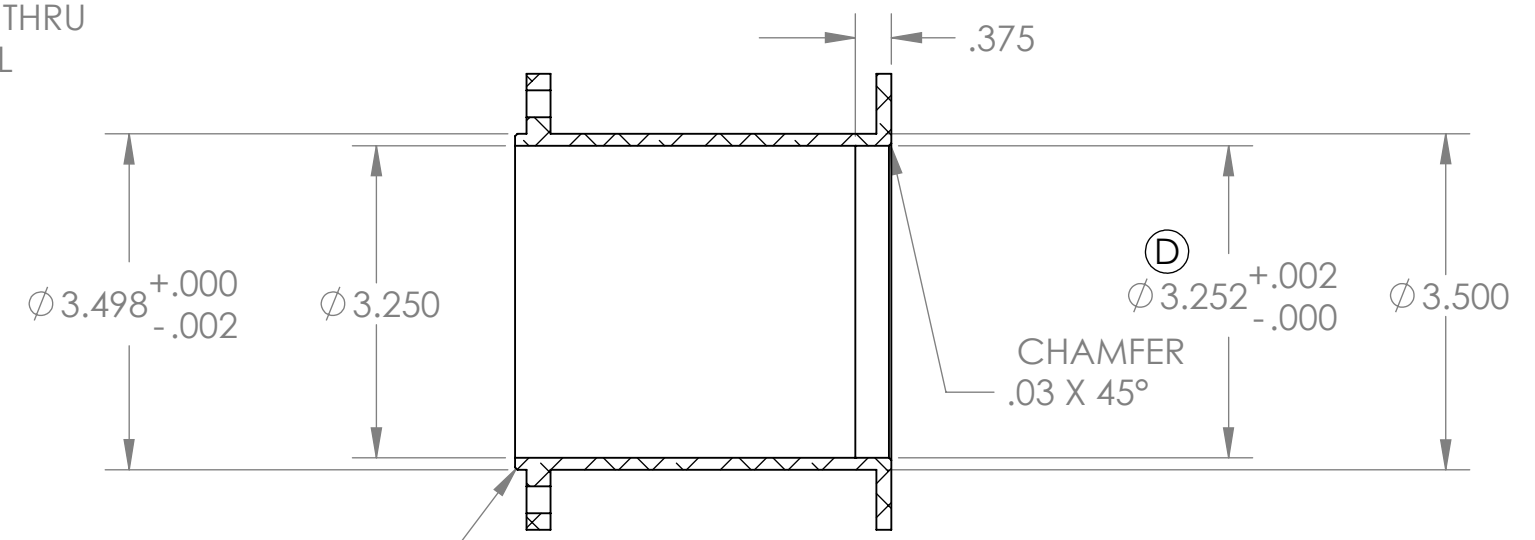
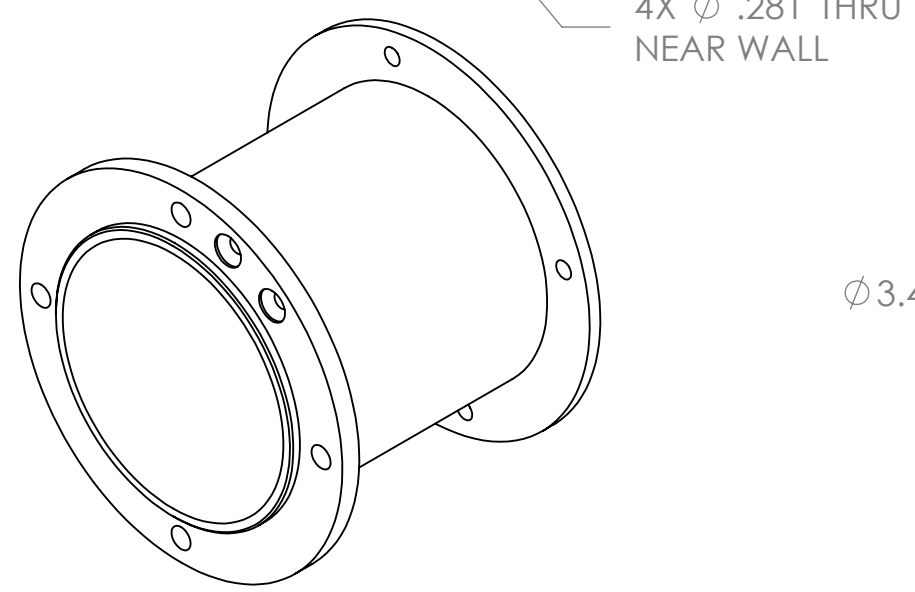
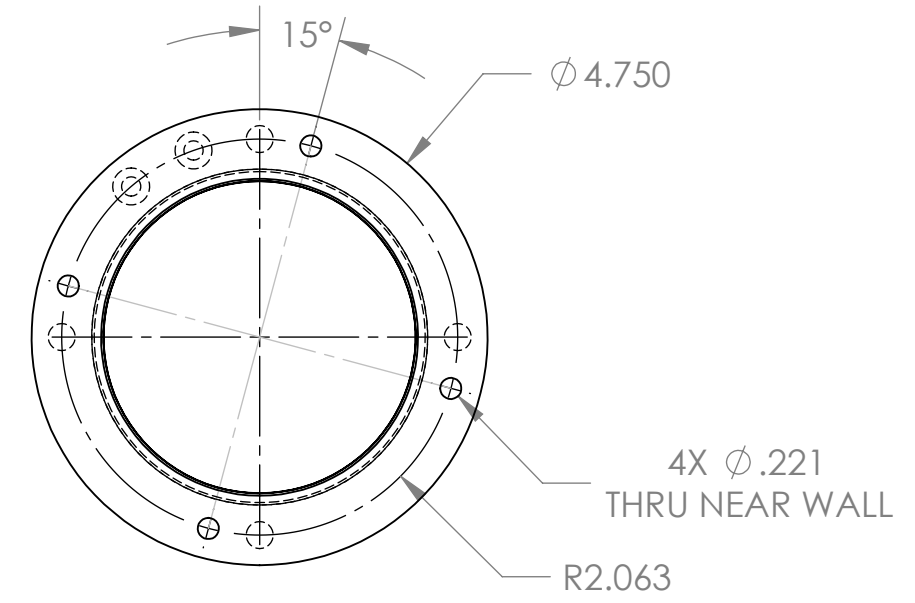
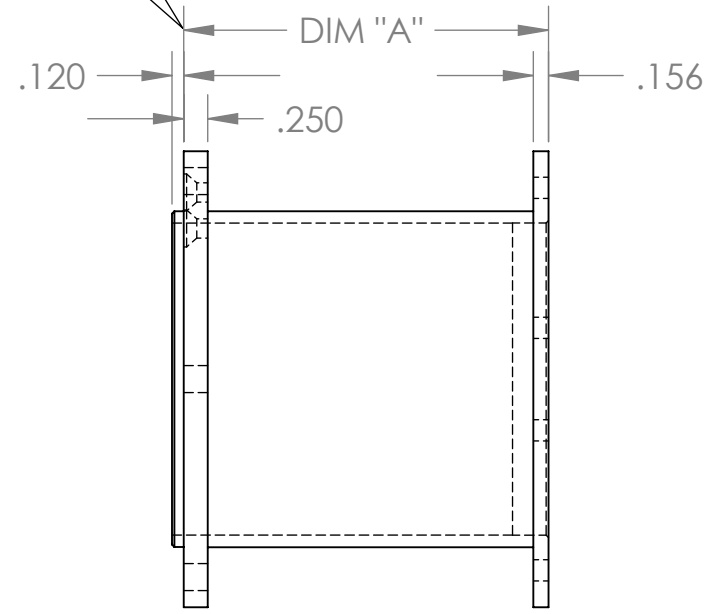
PART NUMBER	DIM "A"
200361-1	3.800
200361-2	2.100

PART NUMBER	DIM "A"
200361-1	3.800
200361-2	2.100
(B) 200361-3	4.500
(C) 200361-4	5.200
(C) 200361-5	5.900
(C) 200361-6	6.75

REVISIONS				
REV.	DESCRIPTION	DATE	CREATED BY	APPROVED
A	INITIAL RELEASE	11/24/2006		
B	ADDED 200361-2 DIMENSION			
C	ADDED 200361-3, 200361-4, 200361-5 DIMENSIONS	5/6/2013	AWK	RLH
D	INCREASED ID FOR MATING CLEARANCE	7/30/2014	APF	APF
E	ADDED 200361-6 DIM A 6.75	5/12/15	DNG	



2X  $\phi$  .201  $\nabla$  .500  
 $\sphericalangle$   $\phi$  .385 X 82°  
 $\sqsubset$   $\phi$  .385  $\nabla$  .030



- NOTES:
- REMOVE ALL SHARP EDGES.
  - FINISH: BLACK ANODIZE PER MIL-A-8625, TYPE II, CLASS 2
  - FIT TEST WITH 200371 (3" SECUREFIT EXTENDER)
  - FIT TEST WITH LARGE SIZE HEDRICK FOCUSER

**PROPRIETARY AND CONFIDENTIAL**  
 THE INFORMATION CONTAINED IN THIS DRAWING IS THE SOLE PROPERTY OF PLANEWAVE INSTRUMENTS. ANY REPRODUCTION IN PART OR AS A WHOLE WITHOUT THE WRITTEN PERMISSION OF PLANEWAVE INSTRUMENTS IS PROHIBITED.

UNLESS OTHERWISE SPECIFIED TOLERANCES  
 DECIMAL DIM .XXXX ±.0005  
 .XXX ±.005  
 .XX ±.02  
 SURFACE FINISH  $\sphericalangle$   
 MAX R 0.015  
 BREAK ALL SHARP EDGES & REMOVE BURRS.

NAME	DATE
W. ZHOU	11/24/2006
CHECKED	
ENG APPR.	
MATERIAL	
6061-T6 AL ALLOY	
FINISH	
SEE NOTE	

**PLANEwave Instruments**

TITLE: **SECURE FIT SPACER**

MATERIAL: 6061-T6 AL ALLOY

SIZE: **B** DWG. NO. **200361** REV. **E**

SCALE: 1:2 CAD FILE: 200361E SHEET 1 OF 1

8 7 6 5 4 3 2 1